

# Confined Space Inventory for Saint Cloud Public Schools



**Inspector:** Rachel Koehler

**Inspection Date:** 12/12/2006

**Building:** *Westwood Elementary*

**Location:** *Boiler Room*

**Type of Space:** *Tunnel*

**Space Classification:** *Non-Permit*

**Potential Hazards:**

*No Hazards*

**Number of Entries into Space:** *5*

**Other Considerations:**

*Asbestos*

*City sewer or water*

*Electrical*

*Gas lines*

*Poor lighting*

*Steam pipes*

**Comments:** *Tunnel travels throughout the northeast side of the building.*



**Photo Date:** 12/12/2006

**Photo Description**

Tunnel access in Boiler Room.

# Confined Space Inventory for Saint Cloud Public Schools



**Inspector:** Rachel Koehler

**Inspection Date:** 12/12/2006

**Building:** *Westwood Elementary*

**Location:** *Boiler Room*

**Type of Space:** *Tunnel*

**Space Classification:** *Non-Permit*

**Potential Hazards:**

*No Hazards*

**Number of Entries into Space:** *4*

**Other Considerations:**

*Asbestos*

*City sewer or water*

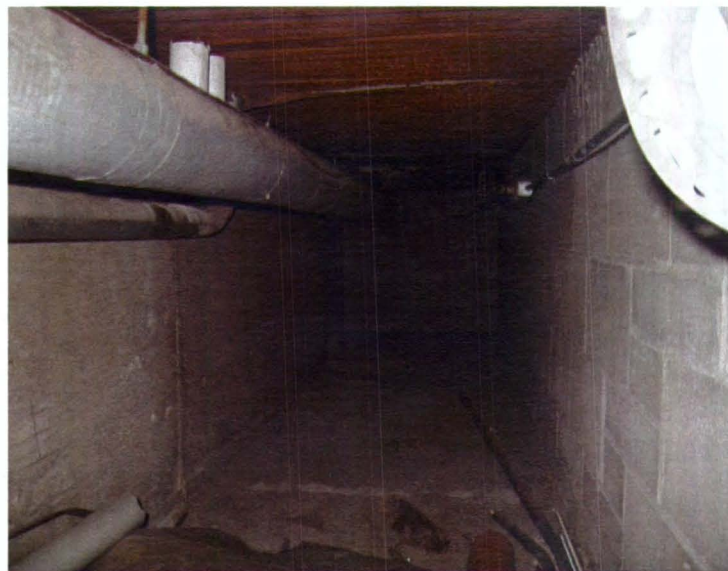
*Electrical*

*Gas lines*

*Poor lighting*

*Steam pipes*

**Comments:** *Tunnel travels throughout the northwest side of the building.*



**Photo Date:** 12/12/2006

**Photo Description**

Tunnel access in Boiler Room.



# Confined Space Inventory for Saint Cloud Public Schools



**Inspector:** Rachel Koehler

**Inspection Date:** 12/12/2006

**Building:** *Westwood Elementary*

**Location:** *Boiler Room*

**Type of Space:** *Tunnel*

**Space Classification:** *Non-Permit*

**Potential Hazards:**

*No Hazards*

**Number of Entries into Space:** *2*

**Other Considerations:**

*Asbestos*

*City sewer or water*

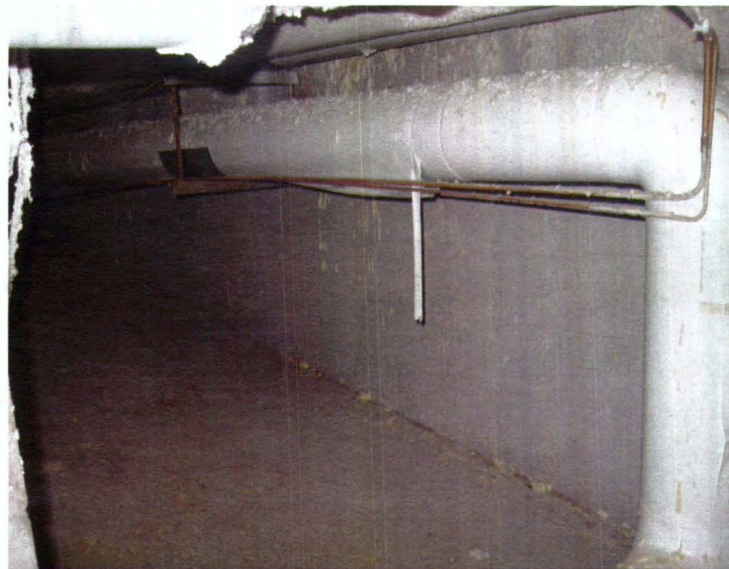
*Electrical*

*Gas lines*

*Poor lighting*

*Steam pipes*

**Comments:** *Tunnel travels throughout the southeast side of the building.*



**Photo Date:** 12/12/2006

**Photo Description**

Tunnel access in Boiler Room.

# Confined Space Inventory for Saint Cloud Public Schools



**Inspector:** Rachel Koehler

**Inspection Date:** 12/12/2006

**Building:** *Westwood Elementary*

**Location:** *Exterior Building Southwest corner*

**Type of Space:** *Storm sewer ( 2 )*

**Space Classification:** *Permit*

**Potential Hazards:**

*Potential for oxygen deficiency*

*Engulfment*

*Configuration*

**Number of Entries into Space:** *1*

**Other Considerations:**

*City sewer or water*

*Fall hazards*

*Poor lighting*

*Slick/wet surfaces*

**Comments:** *None*



**Photo Date:** 12/12/2006

**Photo Description**

Storm Sewer



# Confined Space Inventory for Saint Cloud Public Schools



**Inspector:** Rachel Koehler

**Inspection Date:** 12/12/2006

**Building:** *Westwood Elementary*

**Location:** *Exterior Building Southeast corner*

**Type of Space:** *Storm sewer ( 2 )*

**Space Classification:** *Permit*

**Potential Hazards:**

*Potential for oxygen deficiency*

*Engulfment*

*Configuration*

**Number of Entries into Space:** *1*

**Other Considerations:**

*City sewer or water*

*Fall hazards*

*Poor lighting*

*Slick/wet surfaces*

**Comments:** *None*



**Photo Date:** 12/12/2006

**Photo Description**

Storm Sewer